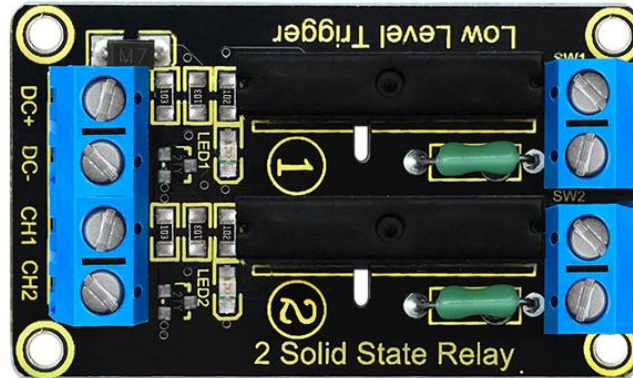


keystudio

Keystudio Two-channel Solid State Relay



Introduction

Keystudio two-channel solid state relay is a low level and effective solid state relay, that is to say, the input control signals is the low level (0-1.5 V), the relay is on; while the input control signal is high level (3-5 V), the relay is off.

Solid State Relay is a new kind of contactless switching device which is composed of all solid state electronic components. Compared with the electromagnetic relay, its reliability is more higher, with the features of non-contact, long service life, fast and less outside interference.

The output control terminal of the keystudio solid-state relay must be connected to the circuit, and its working current needs to be bigger than 50mA, so that the solid state relay can be disconnected normally.

Performance Parameters

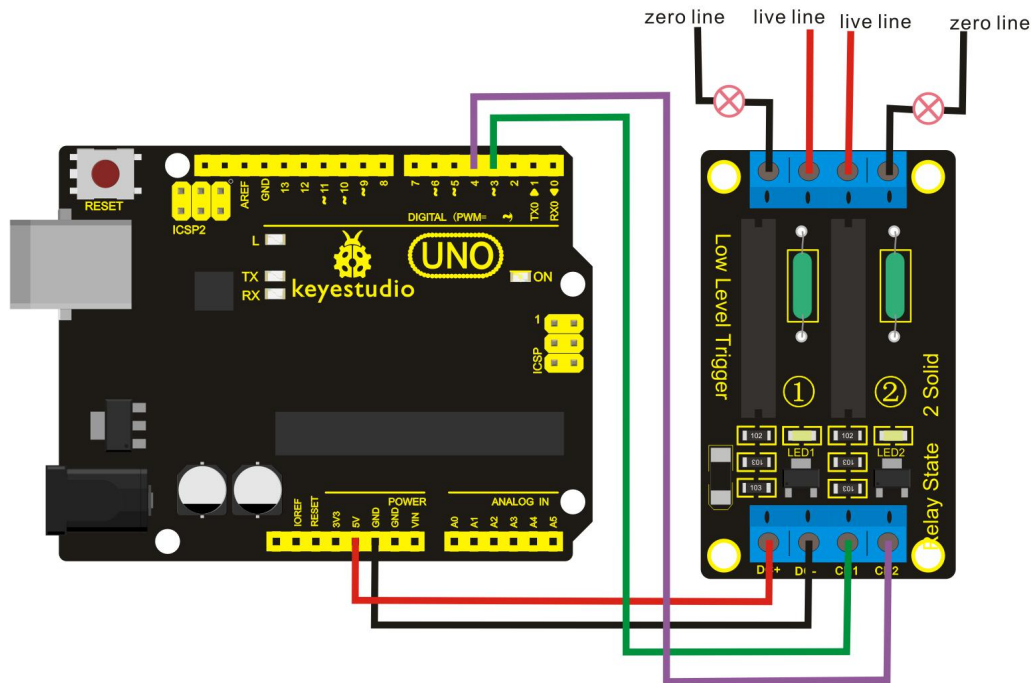
Electrical parameters:

	Voltage	Static Current	Working Current	Trigger Voltage	Trigger Current
Channel 1	DC 5V	0mA	12.5mA	0-1.5V	2mA
Channel 2	DC 5V	0mA	12.5mA	0-1.5V	2mA

Output port: AC240V/2A

keystudio

Connection Diagram



Sample Code

```
int BASE = 3 ; //The first relay I/O port
int NUM = 2;   //Total number of relay
void setup()
{
    for (int i = BASE; i < BASE + NUM; i ++ )
    {
        pinMode(i, OUTPUT);    //Set the digital I/O port to output
    }
}

void loop()
{
    for (int i = BASE; i < BASE + NUM; i ++ )
    {
        digitalWrite(i, LOW);    //Set the digital I/O port outputs to "low", that is, gradually open
        relay
        delay(200);              //delay
    }
    for (int i = BASE; i < BASE + NUM; i ++ )
```

keystudio

```
{
  digitalWrite(i, HIGH);    //Set the digital I/O port outputs to "high", that is, gradually
close relay
  delay(200);              //delay
}
}
```

Test Result

Wiring as the above image, after powered-on, the two-channel solid state relay is first connected and then broken successively, repeating alternately.